

# Plastics

## HOTLINE

May 2022

rdgmedia  
PUBLICATION

In This Issue: Berlyn ECM, Inc 13 | Plastrac Inc 8 | Garden City Plastics 14 | Rechner Electronics Industries 12

## iD Eco-PRO 360

### For Performance and Price, No Other Mold Cleaning System Comes Close!

The Eco-Pro 360 plastic mold cleaning system from iD Additives removes, protects and helps prevent rust within cooling passages, heat exchangers and water lines. Eco-Pro has numerous advantages over other mold cleaning systems, including:

#### Reusable Fluid

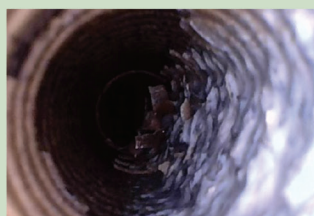
- Eco-Pro fluid is non-caustic and reusable numerous times without replacement
- Does not need to be disposed as a hazardous waste

#### Air

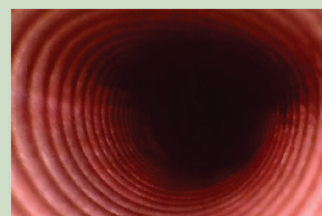
- Eco-Pro runs off compressed air vs. electricity
- Easy connection and usability in any shop

#### Pricing

- Competitively priced vs. other systems
- Cart features pump and filter combination unit for easy use and longer fluid life



Heat Exchanger BEFORE



Heat Exchanger AFTER



iD Additives™

Connect  
With Us! [f](#) [t](#) [in](#)

Check Out Our  
YouTube Videos!



Unmatched Technical Support for Innovative Products!

iD Additives, Inc • 512 W Burlington Ave., La Grange, IL 60525



#MAGUIREMASTERS

# MAGUIRE MASTERS OF BLENDING™

★ 30+ YEARS ★



- ★ Close to **60,000 blenders** sold worldwide
- ★ **More standard models** than any other producer
- ★ **30+ years** of experience in Gravimetric Blending
- ★ Industry leading **5 year warranty**

**MAGUIRE®**  
*Intelligent Simplicity*

Are you the next Maguire Master? Call us now to find out more.

🐦 @MaguireProducts    in Maguire-Products    📺 MaguireProducts

info@maguire.com | www.maguire.com

USA Toll Free +1 888 459 2412 | Canada +1 905 879 1 100 | Europe +44 1827 338 280 | Asia +65 6848 7117 | IMEA +971 4 817 0419 | Taiwan +886 4 2658 1535



# NEO series

Design drives change.



## The all new NEO Series

The **NEO** family of premium injection molding machines are designed to offer stable, precise, efficient and energy saving performance.

Excellent specifications. Industry 4.0 ready controller, and leading brand componentry, all used in conjunction with cutting-edge design, produce machines that are perfect for even the most demanding applications.

Tederic is a manufacturer of premium high-performance injection molding machinery. Products range from 55t to 7000t and include servo-toggle, servo-2 platen, hybrid electric, all-electric, and specialty multi-material solutions.

In more than 1.5M sq. ft. of space Tederic has vertically integrated manufacturing facilities, including an in-house casting plant, which allows for close control of the quality of the core components of the machines.

With more than 1000 employees and worldwide sales to more than 130 countries, Tederic has a vibrant and growing global footprint.

### NEO-T Servo-toggle IMM 90t - 500t



### NEOH Two platen IMM 550t - 7000t



### NEO-E All - electric IMM 5 St - 460t



### NEOM Multi-material IMM 170t-4000t



## Globeius

Our mold releases, cleaners, rust preventives, lubricants and purging compounds are BETTER for your maintenance needs because they are formulated to ensure maximum productivity and contain no trichlorethylene and no chlorinated solvents.



Learn more at <https://globeius.com/collections/slide>

## Blades Machinery Co., Inc.

For Sale: Used Champion Model 20" x 44" Magnum Hammer-mill. 200HP, 460V. 44" diameter rotor, 3/16" screens. SN#102396.

847-439-2126

[www.bladesmachinery.com](http://www.bladesmachinery.com)



## Transform your Extrusion Business with custom tooling from NJPT.COM

We specialize in 5 day (or sooner) delivery of custom plastic extrusion tooling for many industries and applications, including: POP, price channels, displays, slat walls, packaging products, commercial products, industrial and home building products, tubing and hollow profiles, sheet, film and more.



Learn more at [www.njpt.com](http://www.njpt.com) or watch our video *Automated Design & Manufacture of Plastic Extrusion Dies* at <https://www.njpt.com/videos.html>.

## Eco-Pro Mold Cleaning System

The Eco-Pro 360 plastics mold cleaning system for iD Additives removes, protects and helps prevent rust within cooling passages, heat exchangers and water lines. The system has advantages over other mold cleaning systems, including non-caustic fluid that is reusable numerous times, runs off compressed air and is competitively priced vs. other systems. Learn more about the Eco-Pro system and other innovative products including purging compounds and foaming agents at [idadditives.com](http://idadditives.com).



## Maguire Blenders: Save up to 20% on expensive raw materials

Maguire WSB blenders often achieve a complete ROI in 3-6 months, through savings in raw materials and control of expensive additives. We offer standard solutions for every process to meet your needs, from Injection and Blow Molding; Compounding; Film, Profile and Sheet Extrusion. Our proprietary software manages vibration without compromising installation so you will always get 100 % accuracy and control an average industry blender that doesn't offer the same. Plus, a 5-year warranty. Find out more here: <https://bit.ly/38OU6i8>



## Modular Four Component Gravimetric Blender - Model GA-404 from Plastrac

Part of Plastrac's All-Fed, Auto-Disc Series, the GA-404 is for the metering and blending of four ingredients. Applications include injection molding, injection blow molding, extrusion, or set rate metering (starve-fed). It features a capacity of 900 lbs per hour (409 kg per hour). The versatile feeder handles all pellet types (including micropellets) and regrind. The unit's Recovery Time Tracking and Timer Mode synchronizes it with the process machine. For more details, visit [plastrac.com](http://plastrac.com).



## CleanChanger: the unique self-cleaning screen changer with automatic breaker plate ejection system



The CleanChanger of BD Plast gives an automatic filtration system with free movement of plates; increased filtration area and no need for extra devices of screen packs retention. It is the only screen changer with automatic breaker plate ejection system when screen packs replacement is necessary. CleanChanger requires low back pressure for self-cleaning of the screen packs (8 bar tested) and is efficient up to 200 cleaning cycles before replacement of screen packs, reducing to a minimum maintenance costs of manual operations.

[www.irecyclingsolutions.com](http://www.irecyclingsolutions.com)

## Burger & Brown Engineering

Burger & Brown Engineering is pleased to announce the release of a new **High Temperature Low Flow Indicator** demonstrating the presence of flow inside critical, restricted cooling paths. The indicator is suitable for use with high pressure hot water cooling system circuits containing bubblers or baffles. A high-visibility impeller sits behind a glass window for visual indication of flow. Flow indication is between 0.3 – 4LPM (0.08 – 1GPM) at 204°C (400°F) max temp with 17.2bar (250psi) max operating pressure. Optional high pressure and temperature flow regulator can be added to provide molders fine adjustment to cooling circuit flow rates.



<https://www.smartflow-usa.com/High-temp-low-flow-indicator.htm>



## **BETTER** in Maintenance, Repair and Operations

**BETTER** in mold storage...  
with specialized mold rack systems  
saving up to 80% space



**BETTER** in confined spaces for safe  
load lifting...with mini cranes designed  
specifically for the molding industry



See us at...



[www.globeius.com](http://www.globeius.com)

Tel.: (305)889-1782  
Email: [info@globeius.com](mailto:info@globeius.com)



# BARREL BORE GAUGES

Checks IDs  $\frac{3}{4}$ " – 24"

Checks barrel lengths to 30'



Over 30 years experience  
designing, manufacturing, rebuilding,  
Screws and Barrels.

For Injection, extrusion and mold molding.

**FLITE**  
TECHNOLOGY

[www.flitetech.com](http://www.flitetech.com)

toll free: (800) 327-9310

phone: (321) 631-2050

fax: (321) 636-3508

# INNOVATIVE ROBOTICS LINE FOR PLASTICS INJECTION MOLDING !

## H5 Series !

Heavy Payload , Low ceiling !



## H5 SERIES

- Molding Machine Size : 750 ~ 4,000 Tons
- Full Servo Robot up with 5 Axis AC Digital Servo.
- Industry First !. raverse ( 1 Axis ) + Articulated Robot ( 4 Axis )
- Heavy Payload, Low ceiling & Less foot print
- Application : Basic Take out, Stacking, Insert Over Molding, Gate cutting, 2ndary automation!
- Features : High Strength Steel Frame, Powerful AC servo Motor, High Precision NSK Liner Motion Guide.

## H5-C10 Controller

- 7" Wide Touch Screen
- ARM Cortex-A8 CPU, DDR2 512 MB
- Body Attached I.O box
- High-Performance EtherCAT Communication
- User-Friendly Icon-Based Control Screen.
- Developed with 30 years experience in the plastics molding industry.
- CE Certified Components, ISO 9001 Quality Production.

## EPIK SERIES ( Single or Double Arm Model )

- Molding Machine Size : 200 ~ 800 Tons
- Single or Double Arm Model ( 3~7 Axis AC Servo Control )
- Control : HYK-70 ( Keba ) Controller
- Application : Basic Take out, Stacking, Insert Over Molding, In Mold Labeling and Other 2ndary Automation, Sprue Picking
- Features : High Strength Steel Frame, High Strength AC servo Motor, Low Noise NSK Liner Motion Guide

## HYK-70 ( KEBA ) Controller

- 7" Wide Touch Screen
- 1.2 GHz, ARM Cortex-A9 Core
- Ergonomic Design,
- High-Performance EtherCAT Communication
- High Quality Components, ISO 9001 Quality Production.
- User-Friendly Icon-Based Control Screen.
- Mode and teaching type programming for beginner mode
- Line by line programming for expert mode

ISO9001 QUALITY

CE CERTIFIED



## EPIK-W SERIES ( Flat Front Style Robot )

- Molding Machine Size : 400 ~ 4,000 Tons
- Flat Front style Robot with Single Arm Model
- Control : HYK-70 ( KEBA ) Controller
- Application : Basic Take out, Stacking, Insert Over Molding, In Mold Labeling and Other 2ndary Automation.
- Features : Longer parts handling, Low ceiling.



## UNIK- SERIES ( Mini Servo Robot)

- Molding Machine Size : 50 ~ 200 Tons
- Single or Double Arm Model
- Control : HYK-70 ( KEBA ) Controller
- Application : Take out, Stacking, Gate cutting, 2ndary Automation, Light Application.



HYROBOTICS CORP.

5319 BROWN AVE. ST. LOUIS MO 63120, USA

WWW.HYROBOTICS.COM



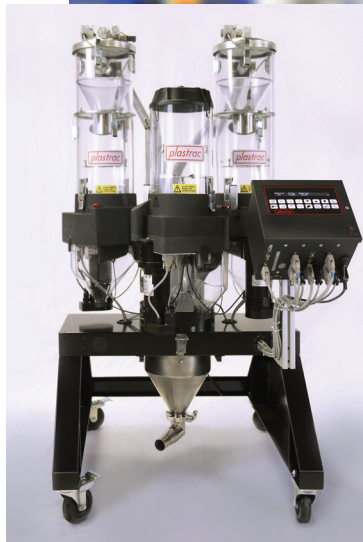


*The perfect blend. Every time.*

## More than fair shares.

**Cart-based Plastrac blenders move between machines to simplify color changes and reduce scrap, especially on short runs.**

To help custom molders achieve extreme efficiency, Plastrac offers fully independent single and dual cart-based blenders that can be shared between multiple machines. They are based on the value proposition of a single virgin feeder and two different color feeders with shared controller and blower system, typically operating independently with either manual color filling or an automated color loader. Operators will be able to switch colors electronically. All parts of our cart systems are easy to connect and disconnect for fast changeovers and setups.



## On the fly Color Changes. PDQ.

There are a lot of features that distinguish a Plastrac blender, but none greater than the ability to change colors as often and as quickly as customer orders demand it. The secret is our level-sensing vane switch (standard on every single blender). Harried processors can hurry up color changes by swapping top castings without any need for cable removal.



## Easy does it blending.

**Now. And down the road.**



Plastrac designs and builds blenders to uncomplicate life for our customers. They are simple to set up. Simple to operate. Simple to adapt in the field. Simple to expand in the future. Let's say you buy a two-component (color + additive) system now, but a few years later, you need to make it a multi-component system. Plastrac blenders are all entirely modular, so you won't be locked into the original configuration if your needs change or grow. What's more, all our parts, mechanical and electronic, are

always well stocked, because we don't think your present or future operations should include downtime.

**plastrac**



610-356-3000 • [Plastrac.com](http://Plastrac.com)



# Temperature Control Units

**Water Units : up to 300°F at 35-100 GPM**

**Oil Units : up to 500°F at 20-100 GPM**

Over 30 Years Experience  
in Temperature Control  
Unit Production!



Dual Zone Dolly

**Water Units**  
Some units in stock  
Call for information

Oil Units

Stacking Stand

Low capital investment, simple start up & operation, easy to maintain, microprocessor control instruments that are easy to read and understand, factory sales and service support along with new product warranties are the reasons why TempTek water and oil products are superior. Call now for Pricing & Delivery!

**317-887-6352**

**www.TempTek.com**

525 East Stop 18 Road  
Greenwood Indiana 46143

**TEMPTEK**

## NO STRINGS ATTACHED!

Progressive's new Nozzle Tips with internal heat sinking fins eliminate mold-damaging strings, and also reduce cycle time, prevent leakage, and improve molded part quality:

- Heat sinking fins: dramatically decreases solidification time.
- Conically tapered bore with large radius: no hang-up areas.
- Textured front face: improves seal, less air infiltration.
- Smaller contact area: reduces carriage blow-back.
- Lower tip mass: faster thermal equilibrium.
- Engraved orifice size: quick set-up times.

Contact Pro at 1-800-269-6653 for a sample  
and to discuss new innovations for molders.

**PROGRESSIVE**  
**C O M P O N E N T S**

**PROCOMPS.COM/NOZZLETIPS**





# Water Chillers

Over 30 Years  
Experience in  
Chiller Production!

**Portable Chillers : .25-40 tons at .7-92 GPM**

Indoor Portable Chiller ... Air or Water Cooled ... some units in stock to 20 tons.

**Central Chillers : 5-180 tons at 48-540 GPM**

Indoor & Outdoor units ... Air or Water Cooled

Complete chiller & pump system packages or stand alone chilling modules.



Portable Chillers

Central Chillers

Low capital investment, simple start up & operation, easy to maintain, microprocessor control instruments that are easy to read and understand, factory sales and service support along with new product warranties are the reasons why TempTek water products are superior. Call now for Pricing & Delivery!

**317-887-6352**

**www.TempTek.com**

525 East Stop 18 Road  
Greenwood Indiana 46143

**TEMPTEK**

## Highest Conveying Capacity

- Continuous push / pull conveying
- Plastic pellets, powders & fly ash
- Exclusive dual blower design
- Low temperature rise
- Blow to silos / fill trucks & railcars
- Up to 135,000 lbs / hr thru 6" line



**Christianson**

Pneumatic Conveying Equipment

**800-328-8896**

**www.christianson.com**





## Do You Have Flow?

### New! - High Temperature Low Flow Indicator



Don't guess when it comes to your critical high temperature and pressure cooling lines with internal restrictions.

### Install a Low Flow Indicator!

- 3/8"NPT or BSPT
- Flow Range: 0.3 - 4LPM (0.08 - 1.0GPM)
- Max Temperature: 204°C (400°F)
- Max Pressure: 17.2bar (250psi)
- High visibility rotor

For greater control over your critical mold cooling channels, pair the indicator with a high temperature flow regulator.

*Follow the QR code for more details!*

**burger & brown** engineering, inc.

**SMARTFLOW**®

[www.smartflow-usa.com](http://www.smartflow-usa.com)

**RAPISTAK**  
CORPORATION

*Go from this...*



**Our mold management systems are designed to save you space, time and money.**

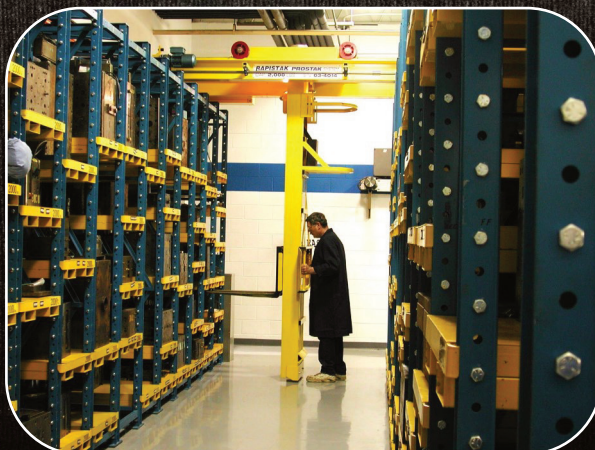
Visit our website or give us a call to learn more about how we can help you with your die or mold management needs.

**716-822-2804 | [www.rapistak.com](http://www.rapistak.com)**

### MORE THAN JUST STORAGE!

- \* Manage your inventory
- \* Become better organized
- \* Protect your investment
- \* Maximize cube utilization
- \* Create a safer working environment

*To this!*





## RECHNER SENSORS

### CAPACITIVE LEVEL CONTROL



www.rechner.com - 1-800-544-4106 - Sanborn, NY

## Plastic Extrusion Tools

### Fast!



40+ EDM machines &  
20+ CNC machines running 24/7

### PLASTIC EXTRUSION TOOLING BUILT IN 1 WEEK!

Quotations within 24 hours...

Tooling production in 24 hours for most plate dies and transitions. Less than one week for many die, transition and calibrator tools.

**New Jersey Precision Technologies, Inc.**

Improving lives through manufacturing innovation.

1081 Bristol Road, Mountainside, NJ 07092

800-409-3000 • email: sales@njpt.com • [www.njpt.com](http://www.njpt.com)

**Increase your  
machines longevity  
by rebuilding the  
toggle linkage.**



**We can rebuild the whole  
"top half" or just the linkage.**



**Birch Machinery • 989-624-9371**  
email: [generalinfo@birchmachinery.com](mailto:generalinfo@birchmachinery.com)  
Website: [www.birchmachinery.com](http://www.birchmachinery.com)

*Any Machine - Anywhere in North America!*

**innovative**  
RECYCLING SOLUTIONS

**HIGH QUALITY EQUIPMENT AND  
CUSTOMIZED SOLUTIONS FOR  
YOUR NEEDS IN RECYCLING AND EXTRUSION**



**We are more than just a sales agency**

[www.irecyclingsolutions.com](http://www.irecyclingsolutions.com)  
[office@irecyclingsolutions.com](mailto:office@irecyclingsolutions.com)  
TOLL FREE: 877 675-0775

Discover our  
best products



# Plastics HOTLINE

**Visit our Buyers' Guide to find industry suppliers for all of your plastics needs.**



**Get Listed In Our Buyers' Guide both in Print and Online!**

Suppliers: Reserve your company's listing today to be listed all year online and in the August 2022 print edition. The sooner you reply, the longer your listing will be seen in the *Plastics Hotline* 2022 Buyers' Guide. There is a range of listing options for the entire year online and in the August printed issue...this puts your company in front of more than 90,000 buyers.

All listings include a live link to your website.

Contact Lydia Stewart at [lydia@plasticshotline.com](mailto:lydia@plasticshotline.com) to get a listing form.

[www.plasticshotline.com/buyers-guide](http://www.plasticshotline.com/buyers-guide)

## IMPROVED PROCESS EFFICIENCY

### DURABILITY

Our extruders provide a greater stability and longer system life that help maintain a healthy bottom line.

### QUALITY

Our years of experience are reflected in every filter that we build. This leads to a superior filter to anything else on the market.

### EXPERTISE

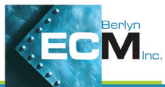
Our technological skills and expertise allow us to build the pelletizing die you need for your operation.

### TECHNOLOGY

We have mastered the design and construction of water baths, giving our customers an edge in their extrusion business.



EXTRUDERS • SCREEN CHANGERS • PELLETIZERS • AIR STRIPPERS • WATER BATHS



**CONTACT US TO SPEAK TO AN EXTRUSION EXPERT**

Working together to provide solutions today for tomorrow's demands

Worcester, MA, USA | Phone: (508) 852-0040 | [www.berlynecm.com](http://www.berlynecm.com)

**REPS WANTED - PLEASE CONTACT US**

## TIE BARS



**Back into Production  
With Minimal Downtime  
Tie Bars & Nuts**



**Birch Machinery • 989-624-9371**  
email: [generalinfo@birchmachinery.com](mailto:generalinfo@birchmachinery.com)  
Website: [www.birchmachinery.com](http://www.birchmachinery.com)

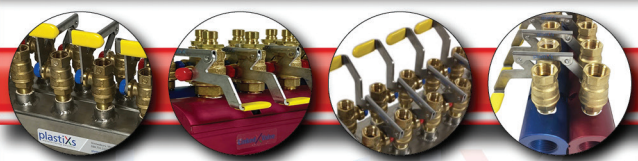
*Any Machine - Anywhere in North America!*



**plastiXs**<sup>®</sup>  
manufacturing solutions

**Linked Valve**<sup>™</sup>

A valve linkage system that allows a single lever to operate both mold cooling supply and return lines simultaneously, allowing for faster mold changes and decreased downtime.



**Designed and Engineered by plastiXs**  
(US Patent 10,160,149 B2)

888-792-2223 | [www.plastixs.com](http://www.plastixs.com) | [sales@plastixs.com](mailto:sales@plastixs.com)



## Blow Molding Machinery, New, Used, Rebuilt. Parts, Service, Technology and Training Classes

Check out website: [www.jackson-machinery.com](http://www.jackson-machinery.com) Or Call 262-284-1066



**Alphamac**  
All Electrical

**Sterling**

**HAYSSEN**

**Garden City Plastics**  
Equipment & Supply Co., Inc.

**Garden City Plastics Equip.**  
104 Lake Rd. Garden City, MO. 64747  
816-862-8703, [www.gcplastics.com](http://www.gcplastics.com)

### For Sale:

- Uniloy 24 Station Wheel
- Molding Machine Heads
- Akei AO-70
- Bekum H-111
- Bekum H-121
- Bekum H-151
- Fischer FHB-106-1&2
- Magic MGL-5
- Uniloy 2016, 250R, 350R2, 2, 4 & 6 Heads
- Jomar 175-Ton IBM
- Chillers, Grinders, Marley Towers & Tanks
- High Pressure Air-Compressors



**United Plastics, Inc.**  
1227 Garfield Avenue • Flint, MI 48505  
PH: 810-238-2186 • FAX: 810-238-2273  
email: [roy@unitedplasticsinc.com](mailto:roy@unitedplasticsinc.com)  
[www.unitedplasticsinc.com](http://www.unitedplasticsinc.com)

### BUY/SELL:

Plastic and surplus regrind, repro, virgin materials, dunnage, trays, pallets, crates, parts, sheet, pipe, purge

### SERVICES:

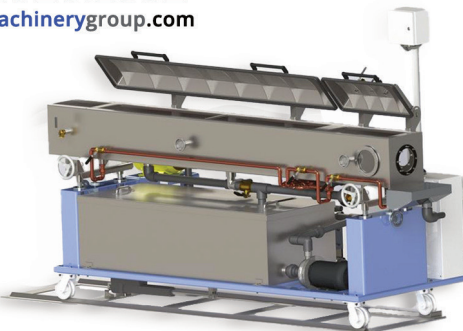
Washing & Drying Capabilities,  
Toll Grinding 200,000 lbs. + per day

**FACTS** Machinery Group

## Downstream Extrusion Equipment

- Cooling Tanks
- Vacuum Tanks
- Belted Pullers
- Cutters & Saws

**330.928.2332**  
[factsmachinerygroup.com](http://factsmachinerygroup.com)



## Better Plastic Solutions Inc.

EMI Roller Type Parts Separator

Crizaf Rotary Assembly  
Table 115 volt

2010 Whittman Servo  
Robot 25-120 ton

Una-Dyn DHD-6SB Desiccant  
Dryer, 230 volt with 600lb  
Drying Hopper on a Stand

90 ton Thermal Care  
Water Cooled Chiller

Novatec Portable  
Dryers 25-100 cfm

[www.bplasticsolutions.com](http://www.bplasticsolutions.com)  
Contact: Ben @ 612-940-2774

## AUCTION

### E&K Equipment

Excess equipment to ongoing  
operations - over 500 lots

**Saturday, June 4, 2022**

Live and online at [Hibid.com](http://Hibid.com), see  
[HartlandAuctions.com](http://HartlandAuctions.com) for link

4342 State Route 8,  
Titusville, PA 16354  
Doors open at 8 am,  
Auction begins at 10 am  
Preview: Weds, Thurs, Friday,  
June 1-3, 9 am to 6 pm



### • Plastic Injection Molding Machines & Accessories

Battenfeld BA400, Battenfeld BA800, 2 Ludwig Engel EC88, HPM Access 60 Tiebar-less series, MPG plastic granulator, plastic granules in asst colors, 2 Star Automation screw pickers, Auto loaders, hopper loaders

- |                                      |   |                               |
|--------------------------------------|---|-------------------------------|
| • Construction/<br>Outdoor Equipment | • Trucks<br>Machine & Fab<br>Shop Equipment | • Trailers<br>Welders<br>Saws |
|--------------------------------------|---|-------------------------------|

See [www.HartlandAuctions.com](http://www.HartlandAuctions.com) for more information



**Hartland Machinery Auctioneers**  
P.O. Box 209, Portersville, PA 16051  
724-368-9788 - 724-368-9839 fax  
[hartlandmachinery@gmail.com](mailto:hartlandmachinery@gmail.com)

PA Lic#AY-000190-L, AU-002918-L

**Plastics  
HOTLINE**

CHECK OUT  
OUR WEBSITE!

[PlasticsHotline.com](http://PlasticsHotline.com)



## Plastics HOTLINE

The Monthly  
Marketplace  
for Plastics  
Processing  
Equipment,  
Materials,  
Supplies and  
Business  
Services



Call: 586-227-9344

CHECK OUT OUR WEBSITE!  
[www.plasticshotline.com](http://www.plasticshotline.com)

### GRINDING

- GRANULATION/COARSE GRINDING
- PULVERIZING/FINE GRINDING
- CRYOGENIC GRINDING
- SIFTING/CLASSIFYING
- BLENDING/MIXING
- REPACKAGING

CUSTOM



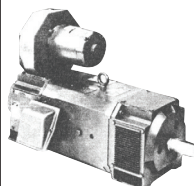
**AllgrindPlastics**  
P.O. Box 363  
Bloomsbury, NJ 08804

**908-479-4400**

web site: [www.allgrind.com](http://www.allgrind.com)  
e-mail: [info@allgrind.com](mailto:info@allgrind.com)

### ROW ELECTRICAL EQUIPMENT INC.

P.O. Box 2812 • Toledo, Ohio 43606 • 419-248-4479 • 800-248-4479  
Fax No. 419-244-8887 • [sales@rowelectrical.com](mailto:sales@rowelectrical.com) • [www.rowelectrical.com](http://www.rowelectrical.com)



100,000 Sq. Ft. Warehouse  
We sell new and used  
industrial electrical equipment, including:

- D.C. and A.C. Motors
- Switchgear
- D.C. Drives
- Gear Reducers
- A.C. Starters
- 1 HP Thru 3500 HP
- Transformers
- Engine-Gen. Sets

**CALL 24 HOURS • WE BUY USED ELECTRICAL EQUIPMENT**

## Air Cooled Portable Chillers

Durable and Efficient

2-100 ton. in capacity



Wide service temperature  
and operating range.



Learn more: 1.800.473.9178 [www.waterchillers.com](http://www.waterchillers.com)

## We Buy & Sell "POLYEVERYTHING"™

P  
O  
L  
Y  
M  
A  
R  
K

All Recyclable Polymer Materials Needed  
Special Requirements Now:

- TPE/TPV Reg, Pell, Purge
- PET and PETG
- PC • Engineering Resins

**All Colors • Any Quantity**

**Serving Clients Nationwide and All Export Markets**

**POLYMARK™**

1147 Willow Ave., Marietta, GA 30067

PH: 770-952-1147 • FAX: 770-951-2474

[ron@polymark.com](mailto:ron@polymark.com)

## PLASTICS HOTLINE

A RDG Media, Inc. Publication  
P.O. Box 80915  
Rochester, MI 48308

CALL 586-227-9344

Presorted Std  
US Postage  
PAID  
RDG Media, Inc.

**BLADES**  
Machinery Co., Inc.

**Tel: 847-439-2126 • Fax: 847-439-0917**

[www.bladesmachinery.com](http://www.bladesmachinery.com)

**e-mail: [blades@bladesmachinery.com](mailto:blades@bladesmachinery.com)**

**MDNA**  
MACHINERY DEALERS  
NATIONAL ASSOCIATION

## THE GRANULATOR SUPERSTORE®

### GRANULATORS

- (6) Wortex UP-730, 735, 755HS
- (3) Cumberland 30T, 56T
- (3) Rapid CR-66
- (65) 8x10 Nelmor 5 HP
- (20) 9x12 Rapid 7.5 HP
- (3) Cumberland Model 18, 20, 30
- (40) 10x12 Nelmor 10 HP
- (10) B&J BP27, BP32
- (6) Cumberland 1215
- (110) Nelmor 1215, 1220
- (1) B&J 1248 w/Feed Rolls
- (5) Conair CG1418, 1424
- (1) Rapid 1418K
- (2) 14x20 Cumberland 20 HP
- (14) Cumberland 284, 484, 584, 684
- (4) Cumberland 1426L, 60 HP
- (5) Nelmor 1436 w/Feedrolls, 1454
- (5) 24B Cumberland 75 HP
- (7) Cumberland 1456, 56U
- (8) Cumberland 1616, 1620, 1628
- (6) Nelmor 1620, 1624, 1628
- (4) 28B Cumberland 75 HP
- (7) Rapid 1824, 1831, W-1836
- (3) Nelmor 1820, 2020
- (2) Cumberland 1836
- (8) 37B Cumberland
- (1) CMG 1842I
- Herbold SMS 45/160 H5-2
- (1) Granutech 2048, 100HP
- (2) Cumberland 50B, 72B
- (2) Cumberland 2428I
- Cumberland Model 80,81
- (5) Rapid Model 2442R, M, H
- Ball & Jewel 3030 (100 HP)
- 26x80 Condux 150 HP
- Nelmor 3048
- (2) Cumberland 3250

- (1) Condux CV-50 Compactor

### SHREDDERS

- (2) ShredTech ST 10
- ShredPax AZ-80
- Mitts & Merrill 2-Shaft Shredder
- ShredTec 30"x52" Shredder

### THERMOFORMING LINES

- (1) Brown CS-4500, 1995 w/ Trim Press
- Brown Trim Presses: T-301, T-340, T-360
- Lyle 40"x40", 50"x50"

### TEMP. CTRL., UNITS CHILLERS

- (7) Sterlco 12 KW Oil Unit
- (6) Thermocare 2, 3 Ton
- Advantage 12KW Oil, 10 KW Water

### PELLETIZERS

- (12) Cumberland 6", 8", 11", 14", 20"
- (3) Conair T208
- (3) Automatik Sphero 220
- (1) Sheer Bay B20-P long cut
- (2) Witte Screeners
- (2) Crown Spin Dryers
- Sweco 18" & 30" Screeners
- (1) Carter Day Spin Dryer

### DRYERS

- (25) Conair CD30, CD100, CS101, CD-200, CD-300, CD-600
- (1) Novatec Novadrier N-150R Unitized
- Una-Dyne DHD-8, DHD-25 w/Hoppers
- (1) Novatec MPC 1000 Dryer

### EXTRUDERS AND LINES

- Leistritz 27mm
- Berstorff 25mm
- (5) 1" Wayne Extruder, Killion
- (3) Davis Standard 1 1/2"
- (3) Davis Standard 2.5" 32:1, 24:1
- Davis Standard 3" 24:1, 30:1
- Davis Standard 3 1/2" 24:1, 30:1
- 3 1/2" Egan Extruder 30:1

- PTI 4" Extruder
- 6" CDL Extruder, Vented, 30:1
- 6 1/2" Davis Standard 27:1, 1999
- (45) Sheet Dies 4"-89" Width
- (6) EDI 20" PVC Siding Dies
- Davis Standard 52" 18x30x30 Roll Stack
- 24"x50" PTI Roll Stack
- 6" 30:1 Prodex
- 78" PTI Sheet Line
- Davis Standard 4 1/2" 24:1

### JUST ARRIVED:

- (6) Beringer 12" Screen Changers
- Sheer Bay SGS-300 Pelletizer
- Pallman PX 315 Pulveriser
- GALA 5MUP Pelletizer
- Condux CS 800/1200 9 Knife
- Simon Day Spin Dryer
- 24"x60" Gloucester 3-Roll Stack
- Nelmor Shredder/Grinder Combo
- Nelmor 2030 Granulator
- (2) Maxon SDFK 67" Sheeter
- (2) BD Plast 350mm Screen Changer
- 600 HP 460V AC Motor (unused)
- B&J VG2257 Granulator
- Pallman PS6-6 Rubber Bale Grinder
- Granutech 3648, 125 HP
- (3) 250 Cubic Feet, SS Ribbon Blenders
- W&P 20mm, 40mm & 83mm  
Twinscrew Extruders
- Parkinson Series 50, 60" Winder
- 200 HP Champion Hammermill
- CME C5 Cooler
- (1) Procedyne TCF-2430 FD
- Rosenthal Sheeters 36", 60", 72"

### PIPE & PROFILE EQUIPMENT

- S.I.C.A. 10" Planetary Saw
- Battenfeld Upcut Saw
- Battenfeld 6"x56" Puller

**"IN STOCK" • OVER 15,000 KNIVES, SCREENS & PARTS**